



Year 11 Information Evening



Introductions

Miss Hannah Khan
Headteacher

Mr Craig Coulstring
Assistant Headteacher

Ms Nimali De Silva
Head of Year 11

Mrs Charlotte Furse
Pastoral Assistant for Y11

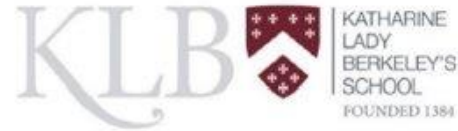


Working Together

- Reports, parents' evenings, Class Charts, monthly newsletters, website
- Email:
 - Most common means of communication with parents (letters)
 - Initial contact, use info@klbschool.org.uk
- Parents' survey (May 2023)
- Spotlight on XXXXX@KLB



Spotlight on...



Spotlight on ... Who's Who @KLB

Who's who and getting in touch

We receive thousands of emails every day. The best way to ensure your email is dealt with promptly and by the correct person, is to send it to info@klbschool.org.uk where it will be triaged by our admin team.

Queries relating to lessons are best dealt with by class teachers and heads of department but please remember that the main focus for teaching staff is supporting children in and out of the classroom. Teachers are often unable to check emails during the day.

We encourage and foster polite and respectful communications throughout both the school and the wider community and thank you for treating our staff with courtesy and respect.

The following emails are for use for specific issues:

Student absence and attendance	attendance@klbschool.org.uk
Finance queries	klbfinance@klbschool.org.uk
Medical queries	medical@klbschool.org.uk
Bus queries	mcloke@klbschool.org.uk
Chair of Trustees	chair@klbschool.org.uk



Working Together

- Communicating concerns
- Social Media:
 - Facebook
 - Instagram
 - Twitter
 - LinkedIn
- KLB Friends
- 5 year or 7 year journey?



Year 11 at KLB

Ms De Silva

Head of Year 11



Year 11 Key Dates

Tuesday 24 October	Core Subjects Parents' Evening.
Wednesday 25 October	Virtual Parents' Evening.
w/b 17 October	Report 1 (EBH, projected)
Tuesday 7 November	Year 11 GCSE Mock information evening for parents
Wednesday 8 November	Mock extended assembly for students.
Thursday 16 November	KLB Sixth Form Open Evening
w/b 4 December	Mock fortnight starts
Wed 16 January	Zoom meeting 1
Friday 19 January	Report 2 (EBH, mock, projected)
Wednesday 24 January	Parents' Evening 2
Tuesday 6 February	Zoom meeting 2
Wednesday 13 Thursday 14 March	Core mocks (Eng lang & Lit, Maths paper 1 & 2)
Mid-March	Students' GCSE preparation
Mid-March	Parents' session: GCSE preparation
Thursday 9 May	GCSEs start
Wednesday 19 June	GCSEs finish
Wednesday 26 June	Contingency exam date
Thursday 20 June	Year 11 prom

Aims for this year

1. To make adopt and maintain a positive approach to learning.
2. To explore and apply for post-16 options.
3. To develop life skills



Profile of a successful pupil in Year 11

- Maintains high good attendance punctuality
- Displays respectful behaviour at all times
- Actively engages in lessons
- Works cooperatively with staff.
- Establishes good routines and is organised (catches up on missed work, aware of key dates, meets deadlines, etc)
- Develops independence and plans ahead (homework, revision, controlled assessment preparation)
- Considers balance (school work, sport, hobbies, socialising, jobs)
- Participates in wider school life
- Plans for the future – explores a range of pathways.



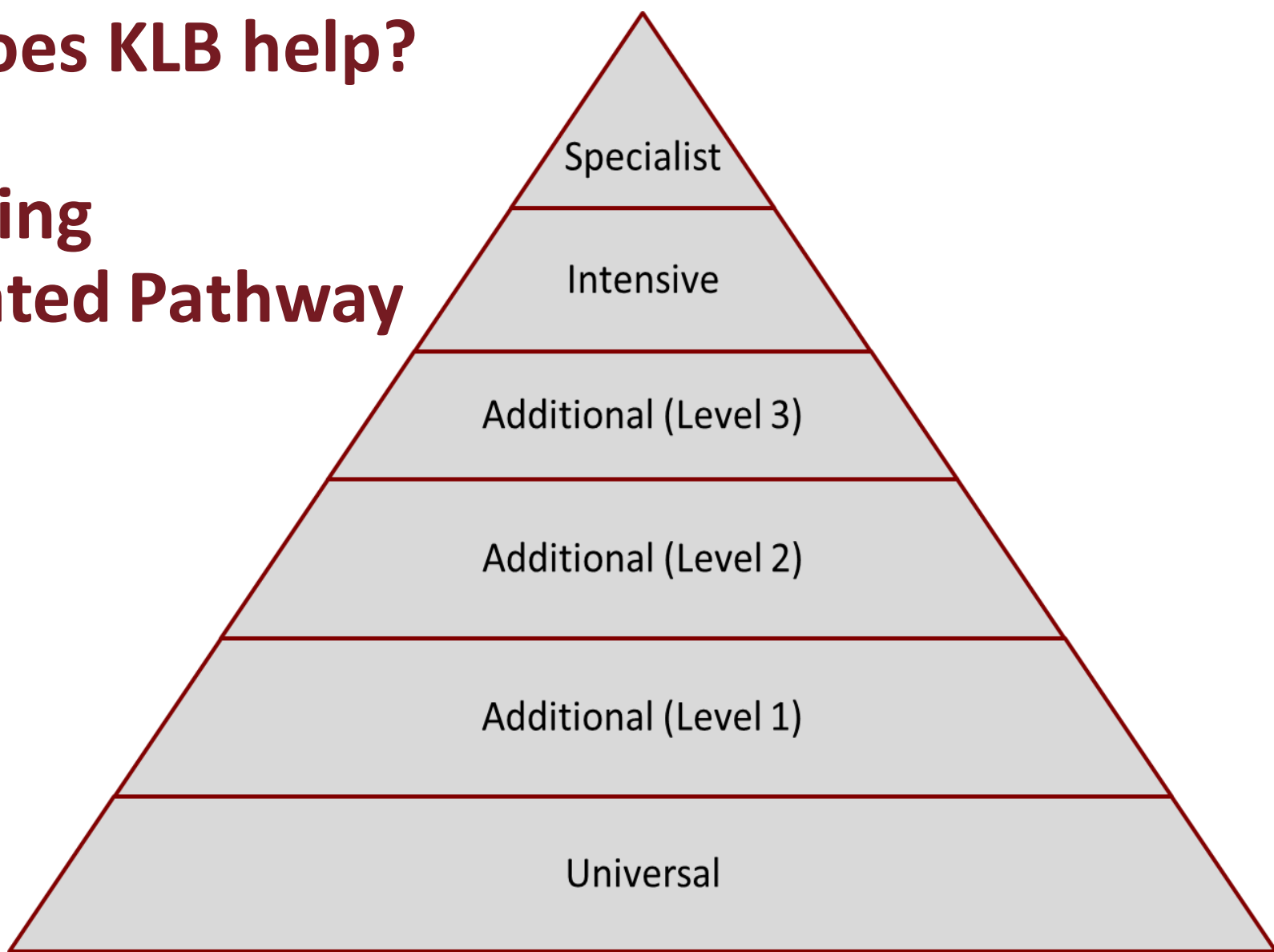
Student Wellbeing

- Social media usage and dependence
- Risk-taking activities/opportunities
- Anxiety and stress
- Exercise and diet
- There is no reason to suggest that the pupils at this school are any different!



How does KLB help?

Wellbeing Graduated Pathway



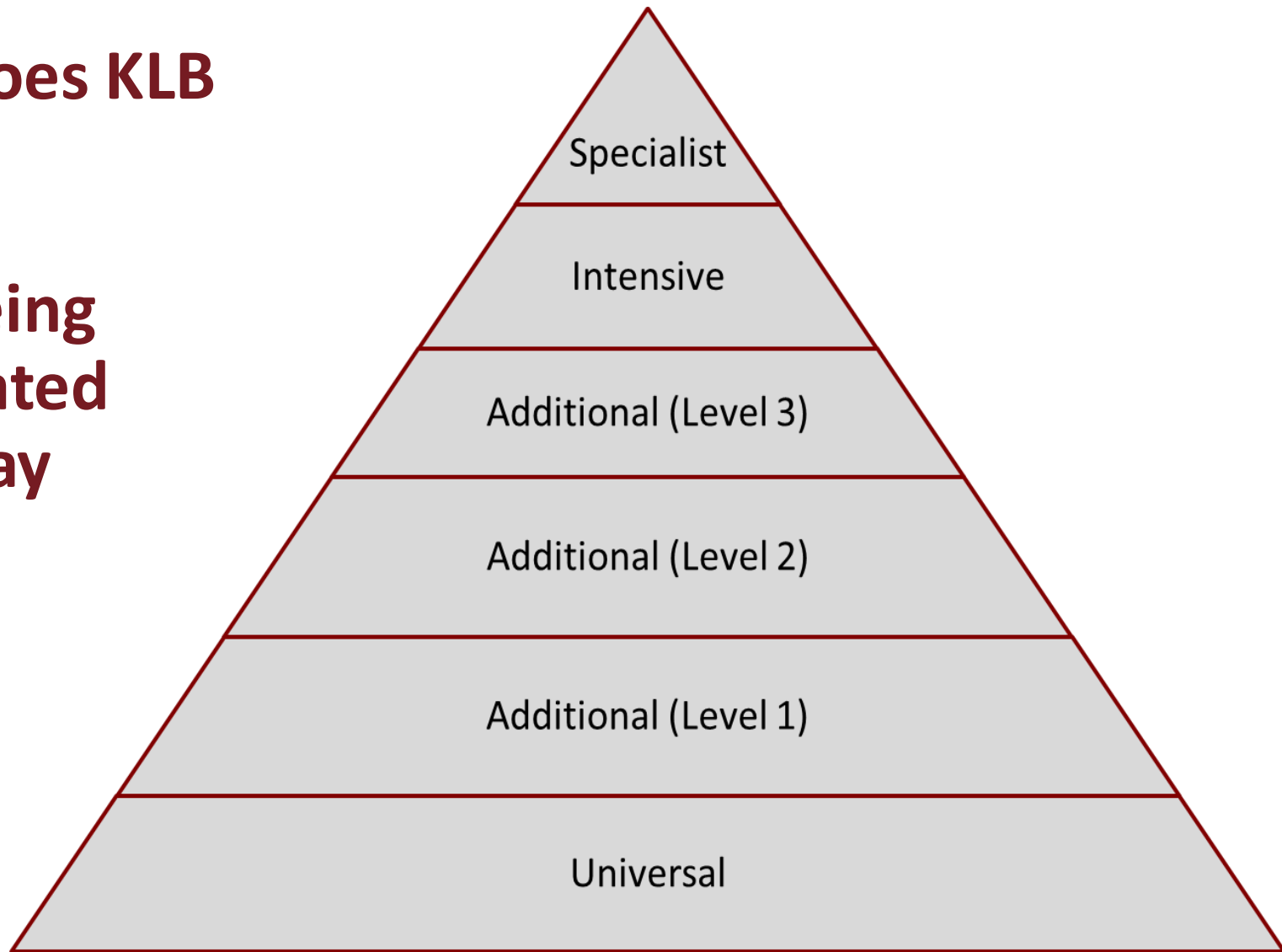
Universal Support

- Raising awareness of mental health during assemblies, tutor time, PSHE and mental health awareness days/weeks
- Monitoring of all students' mental health through student wellbeing questionnaires
- Offering pastoral support through tutor mentoring
- Careers advice
- Wide range of extra-curricular clubs and opportunities
- Staff training about key support strategies
- Signposting students/families to sources of additional support
- Parent workshops:
 - Thurs 19th Oct - A Guide to the Teenage Brain
 - Wed 29th Nov - A Guide to Stress and Anxiety
 - Thurs 30th Jan - A Guide to Resilience and Self-esteem
 - Tues 23rd April - A Guide to Challenging Behaviour



How does KLB help?

Wellbeing Graduated Pathway

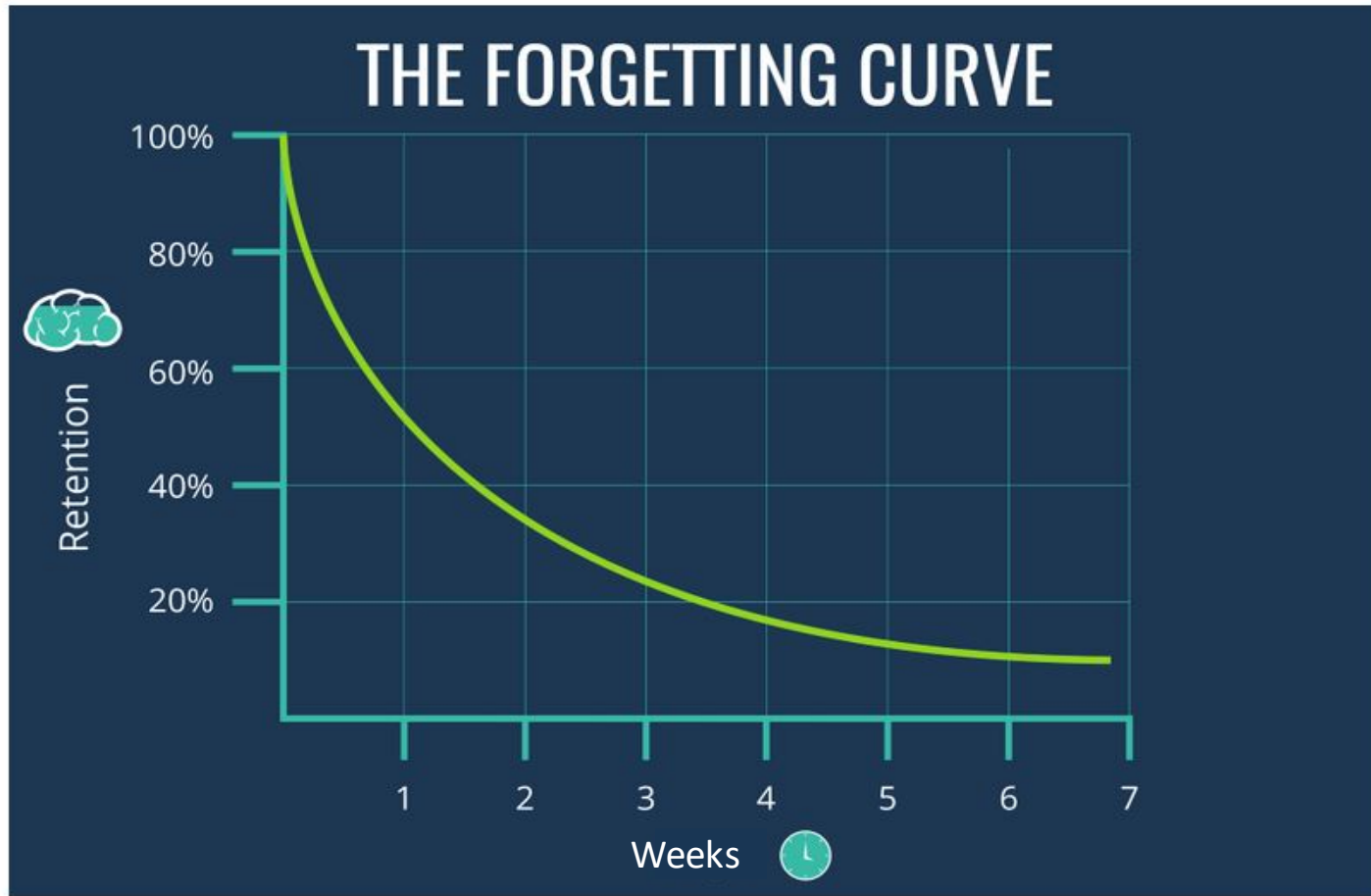


How parents and carers can help

- Encourage high attendance and good punctuality
- Establish a working routine at home
- Use Class Charts regularly
- Support with homework
- Stay in touch
- Monitor use of internet

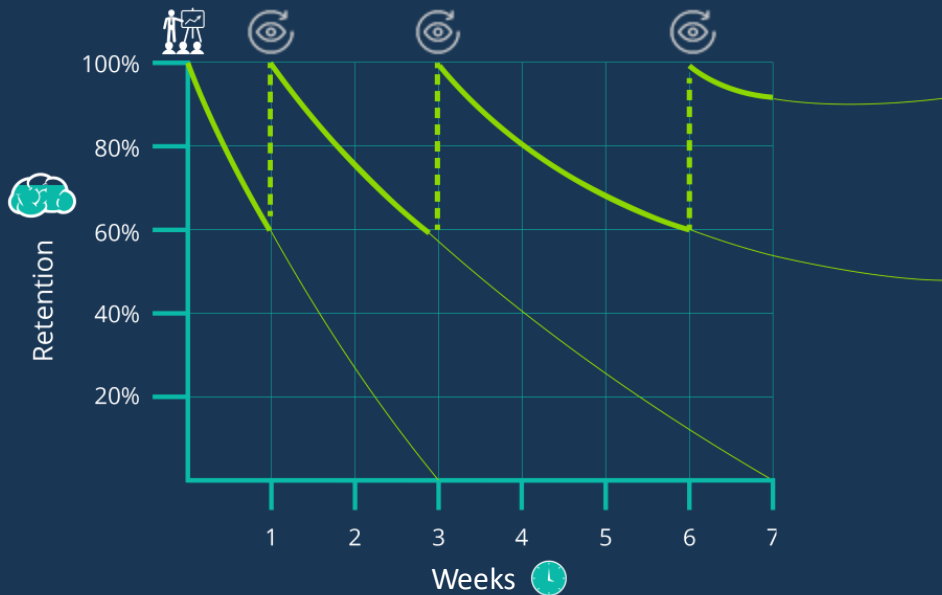


Retaining knowledge is hard!



Retrieval and Revision

COMBATING THE FORGETTING CURVE



The solution to the Forgetting Curve is to revisit work.

This shows the importance of retrieval in lessons, usually in 'Do Now' activities at the very beginning of lessons.

Homework crucial

Learning key vocabulary and returning to it.

Effective last-minute revision lacks impact without previous repetition.

"It is the act of retrieving knowledge from long-term memory which strengthens the memory."

D. Christodoulou, Making Good Progress, (2016).



Year 11 Homework

Homework Timetable – Year 11A

Organisation

- Each GCSE is allocated two homework tasks a fortnight for the 2 week timetable.
- Teachers will set the homework on that day with the deadline usually the following lesson.
- Students are recommended to complete homework on the evening it has been set.

Week 1

Monday	Tuesday	Wednesday	Thursday	Friday
English Language	Maths Option L Chemistry*	Science Option N	English Literature Option P	Science Option K

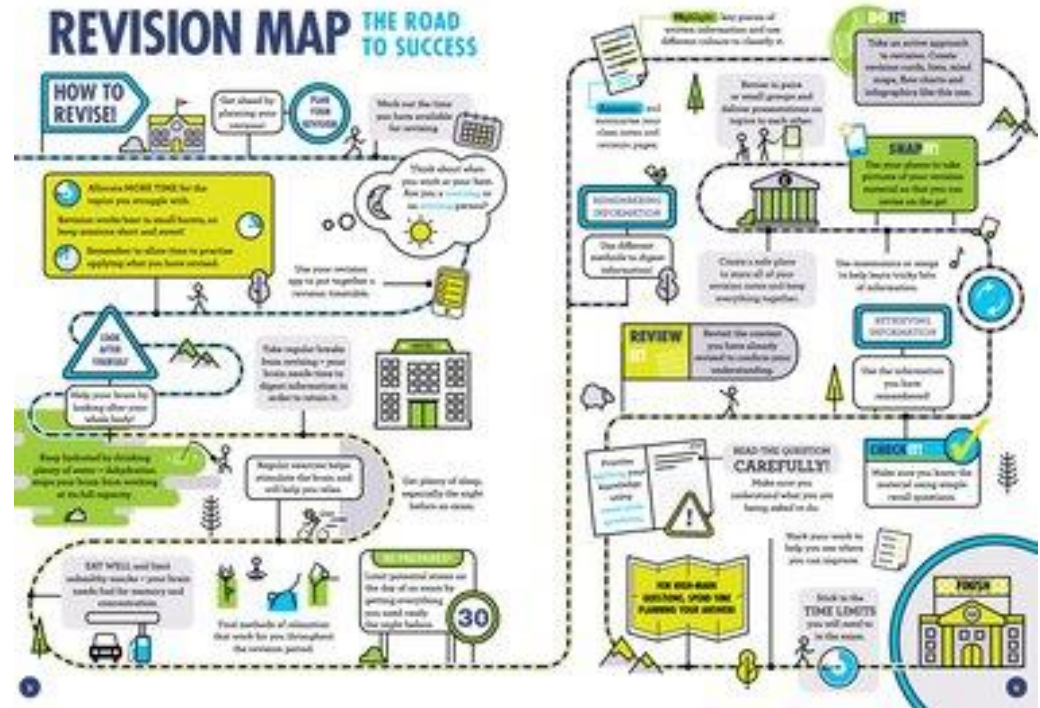
Week 2

Monday	Tuesday	Wednesday	Thursday	Friday
English Language Biology*	Maths Option L	Science Option N	English Literature Option P Physics*	Science Option K



Successful Revision

Students will be taught a range of revision strategies and techniques throughout Y11.




Students will learn how to use a combination of exercise books, text books, revision guides and online support (for example Seneca learning).



Year 11 Newsletter

- Starts in October
- Key dates and Events
- Subject specific information
- Additional subject support sessions
- Careers information
- KLB Sixth Form application timeline



**KATHARINE
LADY
BENNETT'S
SCHOOL**
WIMBORNE

Year 11 Newsletter: November 2022

Welcome to the first edition of the Year 11 newsletter for the current academic year. Within this monthly letter you will find lots of helpful information regarding key dates and activities, as well as department level advice and support for your child.

You can also visit <https://kbschool.org.uk/parents/year11/> for all the most recent news and correspondence for Year 11.

Tuesday 8 November 6.30 – 8.15pm	GCSE Mock Examination Preparation Evening This will be an in-person event for Parents & Carers only based in the Drama Hall.
Wednesday 9 November During school hours	GCSE Mock Examination Preparation session for Students
Thursday 17 November 6.30 – 8.00pm	KLB Sixth Form Open Evening This will be an in-person event based in the Drama Hall and the Renishaw Building. (Further details of this event are later in this newsletter)
w/b 5 December w/b 12 December	Mock examinations fortnight

Success Lounge:
I am delighted to announce that our Year 11 Success Lounge will be returning from Monday 14 November. The success lounge is a supervised study space available from 3.00 - 4.30pm from Monday to Thursday. Students are expected to stay until at least 4pm to reduce disruption during the session. They are welcome to stay until 4.30pm. Students should bring homework and revision material so that they have plenty to keep them busy. Students are allowed to use phones with headphones to listen to music providing this does not disturb others. They may use resources such as GCSE Pod and Quizlet which can be accessed via phones. The sessions are supervised by our support mentors who will be happy to help with general advice about work and revision but will also offer subject specific support where possible as well.

Specific Subject Updates:

Department	November
Art	With our coursework deadline of 13 January fast approaching, we remind Fine Art, Graphic Art and Art, Craft & Design students that the Art department is open after school on Wednesday and Thursday every week for studio space and extra support.
Business Studies	In Business we are launching our mock revision schedule and checklist. This will identify the content and resources that we will cover each week. Students will also be able to access a wide range of resources via Group Resources on the school intranet. In lessons we will be spending a growing proportion of time going through exam questions and exam technique. Please do not hesitate to contact your child's business teacher should you need any further information or advice.
Careers	By the end of November all students will have had the opportunity to have a practice interview with members of Cotswold and District Rotary club and will have received valuable feedback. There will also be a general focus on developing a CV during some of the upcoming tutor time sessions.
Design and Technology	Design and Technology: Design and Technology will continue to offer after school sessions on Tuesday, Wednesday or Thursday from 2.45-4.00pm for GCSE Design and Technology controlled assessment NEA work in D2. Food preparation and Nutrition: Please refer to class charts for important dates regarding NEA 1 controlled assessment. After school sessions for Mrs Dring's group will be on Tuesdays and Mrs King's on Wednesday from 2.45-4.00pm.
Drama	In Drama we have two important events coming up.



Y11 Success Lounge

Year 11 Success Lounge will be returning from November. The success lounge is a supervised study space available from 3.00 - 4.30pm from Monday to Thursday.

Students are expected to stay until at least 4pm to reduce disruption during the session. They are welcome to stay until 4.30pm. Students should bring homework and revision material so that they have plenty to keep them busy.

Students are allowed to use phones with headphones to listen to music providing this does not disturb others.

They may use resources such as GCSE Pod and Quizlet which can be accessed via phones.

The sessions are supervised by our support mentors who will be happy to help with general advice about work and revision but will also offer subject specific support where possible as well.



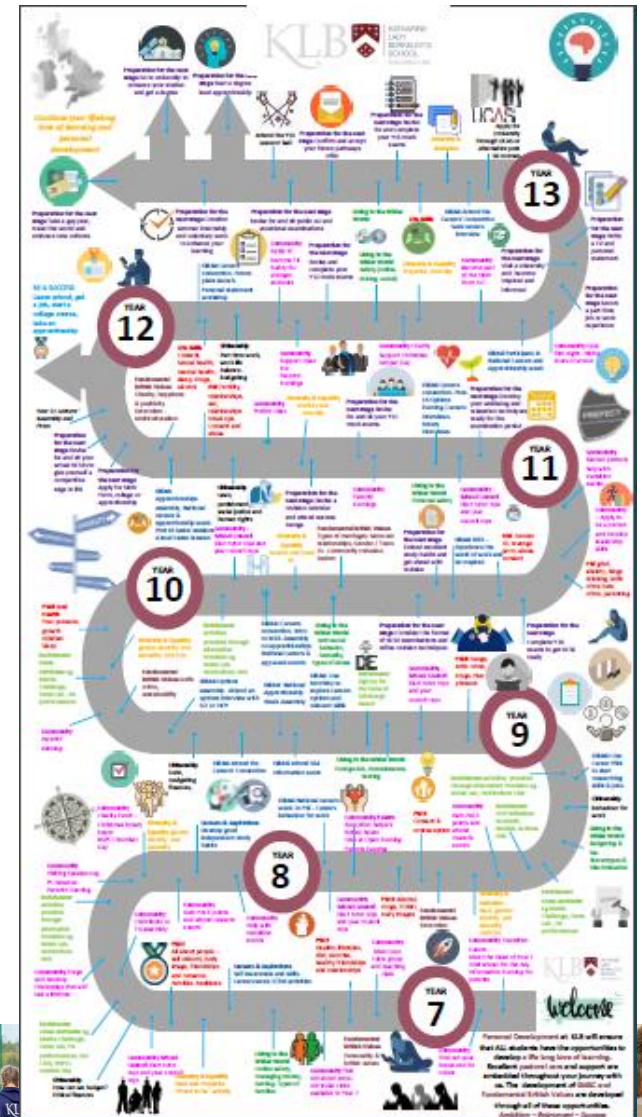
Assessment

- Most subjects are 100% examination at the end of Year 11
- Mock exams at the end of Year 10 and in Year 11 Term 2 provide valuable rehearsal for this process
- Detailed week by week revision plans provided for each mock exam window and for the final exams
- Coursework is used in Art, Music, DT and PE as well as the vocational Health & Social Care, PE VCERT and IT courses
- A list of the revision guides for each subject is provided, important that they are exam board specific



Personal Development at KLB

Personal development isn't just "taught" in PSHE lessons and tutor time, instead it is more about the experiences and opportunities that students will encounter throughout their KLB journey.



Personal Development at KLB



PERSONAL SOCIAL HEALTH EDUCATION



Core Values



INDIVIDUAL LIBERTY



TOLERANCE



DEMOCRACY



THE RULE OF LAW



MUTUAL RESPECT



Next steps...

