

Katharine Lady Berkeley's School

Sixth Form Open Evening

16 November 2023

Introduction:

Hannah Khan, Headteacher

Sixth Form at KLB:

Jane Campion, Head of Sixth Form

Life beyond the classroom:

Natasha Kerr, Head Girl

Isaac Thompson-Gibbs, Deputy Head Boy



KLB Sixth Form Students

- Excellent role models
- Confident
- Resilient
- Respectful
- Caring and kind
- Altruistic
- Tremendous strength of character
- Strong sense of community
- Work in partnership with school
- Growth mindset
- Ambitious
- Motivated
- Independent



Sixth Form students are self-assured and confident but also embody qualities such as ***modesty*** and ***humility***. They, like other pupils in the school, are ***caring*** and ***altruistic***.

Students' ***excellent attitudes to learning*** reflect their high standards of behaviour and attendance.

Sixth Form judged as **Outstanding** by Ofsted 2008, 2012 & 2017 (all graded) and 2023

- Sixth-form students are strong positive role models to younger pupils.
- The sixth-form curriculum offer is exceptional.

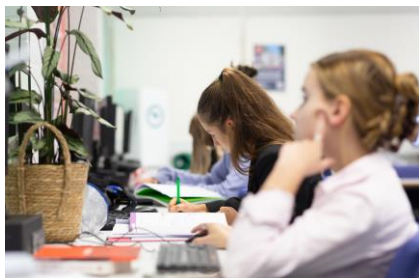
Students take up an impressive range of courses and opportunities. These include extensive trips, music, drama and leadership roles.

What our parents say....

- We are truly grateful to you and her brilliant teachers. We really couldn't have wished for a better team to coach, help and encourage her.
- Our daughter has ***absolutely thrived*** at KLB sixth form. A massive thank you for providing her opportunities to grow and learn.
-can I just repeat my admiration for all you did, something that was pivotal in XXXXX and his friends' future prospects

Excellent results

	2023	2022	2019	2018
%A*		20.4	10.3	14.1
%A*-A		49.9	31.9	36.9
%A*-B		75.5	64.7	67.0
%A*-E		100	99.4	99.5



Excellent results

	2023	2022	2019	2018
%A*	13.9	20.4	10.3	14.1
%A*-A	34.2	49.9	31.9	36.9
%A*-B	63.4	75.5	64.7	67.0
%A*-E	99.5	100	99.4	99.5



Progress measures.....

This is what really matters!



Official DfE Progress 2019 (exams) – not published since!

115 providers in
Gloucestershire, South
Gloucestershire and
Wiltshire

Independent
Comprehensive
Grammar

School	School Type	LA	Av Grade	Value added
KLB School	Grammar	Glos	B+	0.44
	Comprehensive	Glos	B-	0.41
	Comprehensive	Glos	B-	0.34
	Independent	Glos	B	0.30
	Comprehensive	Glos	B	0.29
	Comprehensive	S Glos	C+	0.25
	Grammar	Glos	B	0.21
	Grammar	Glos	A	0.21
	Grammar	Glos	B+	0.18
	Comprehensive	Glos	C	0.16
	Independent	Glos	B-	0.14
	Comprehensive	Glos	C	0.12
	Comprehensive	S Glos	C-	0.12
	Comprehensive	Glos	C	0.10
	Comprehensive	Glos	C	0.09
	Comprehensive	Glos	C+	0.09
	Independent	Glos	B-	0.08
	Independent	Glos	B-	0.08
	Comprehensive	S Glos	C+	0.07
	Comprehensive	Glos	A	0.06
	Comprehensive	S Glos	B-	0.06
	Comprehensive	Glos	B-	0.05
	Grammar	Glos	B	-0.01
	Grammar	Glos	B	-0.01
	Comprehensive	S Glos	C	-0.05
	Comprehensive	Glos	C	-0.07
	Comprehensive	Glos	C-	-0.08
	Comprehensive	Glos	C	-0.08
	Independent	Glos	C+	-0.09
	Grammar	Glos	B-	-0.13
	Comprehensive	S Glos	E	-0.16
	Comprehensive	S Glos	C-	-0.19
	Comprehensive	S Glos	C-	-0.21
	Comprehensive	Glos	C	-0.21
	Comprehensive	Glos	C	-0.23
	Comprehensive	Glos	C-	-0.23
	Comprehensive	S Glos	C	-0.27
	Comprehensive	S Glos	D+	-0.29
	Independent	Glos	C+	-0.29
	Comprehensive	S Glos	C-	-0.3

Official Progress 2019 (exams)



115 providers in
Gloucestershire, South
Gloucestershire and
Wiltshire

1 grammar achieved better
progress

0 comprehensives achieved
better progress

Independent
Comprehensive
Grammar

School	School Type	LA	Av Grade	Value added
KLB School	Grammar	Glos	B+	0.44
	Comprehensive	Glos	B-	0.41
	Comprehensive	Glos	B-	0.34
	Independent	Glos	B	0.30
	Comprehensive	Glos	B	0.29
	Comprehensive	S Glos	C+	0.25
	Grammar	Glos	B	0.21
	Grammar	Glos	A	0.21
	Grammar	Glos	B+	0.18
	Comprehensive	Glos	C	0.16
	Independent	Glos	B-	0.14
	Comprehensive	Glos	C	0.12
	Comprehensive	S Glos	C-	0.12
	Comprehensive	Glos	C	0.10
	Comprehensive	Glos	C	0.09
	Comprehensive	Glos	C+	0.09
	Independent	Glos	B-	0.08
	Independent	Glos	B-	0.08
	Comprehensive	S Glos	C+	0.07
	Comprehensive	Glos	A	0.06
	Comprehensive	S Glos	B-	0.06
	Comprehensive	Glos	B-	0.05
	Grammar	Glos	B	-0.01
	Grammar	Glos	B	-0.01
	Comprehensive	S Glos	C	-0.05
	Comprehensive	Glos	C	-0.07
	Comprehensive	Glos	C-	-0.08
	Comprehensive	Glos	C	-0.08
	Independent	Glos	C+	-0.09
	Grammar	Glos	B-	-0.13
	Comprehensive	S Glos	E	-0.16
	Comprehensive	S Glos	C-	-0.19
	Comprehensive	S Glos	C-	-0.21
	Comprehensive	Glos	C	-0.21
	Comprehensive	Glos	C	-0.23
	Comprehensive	Glos	C-	-0.23
	Comprehensive	S Glos	C	-0.27
	Comprehensive	S Glos	D+	-0.29
	Independent	Glos	C+	-0.29
	Comprehensive	S Glos	C-	-0.3

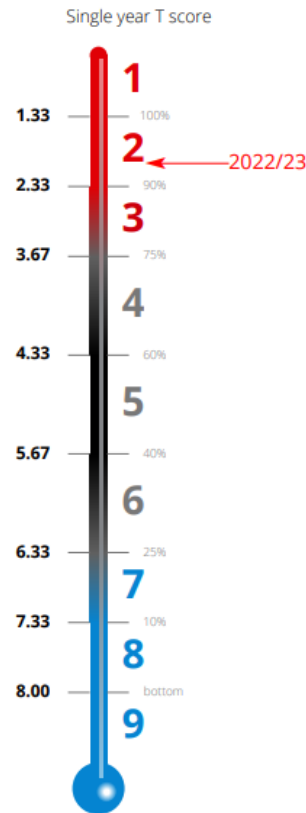
Progress 2023

- Alps compares progress at KLB with over 1300 schools and colleges:
 - Each subject
 - Every student with the same GCSE profile
 - 4 key measures (graded 1 – 9)
 - Grade 3: Top 25%
 - Grade 2: Top 10%
 - Grade 1: Nobody better!



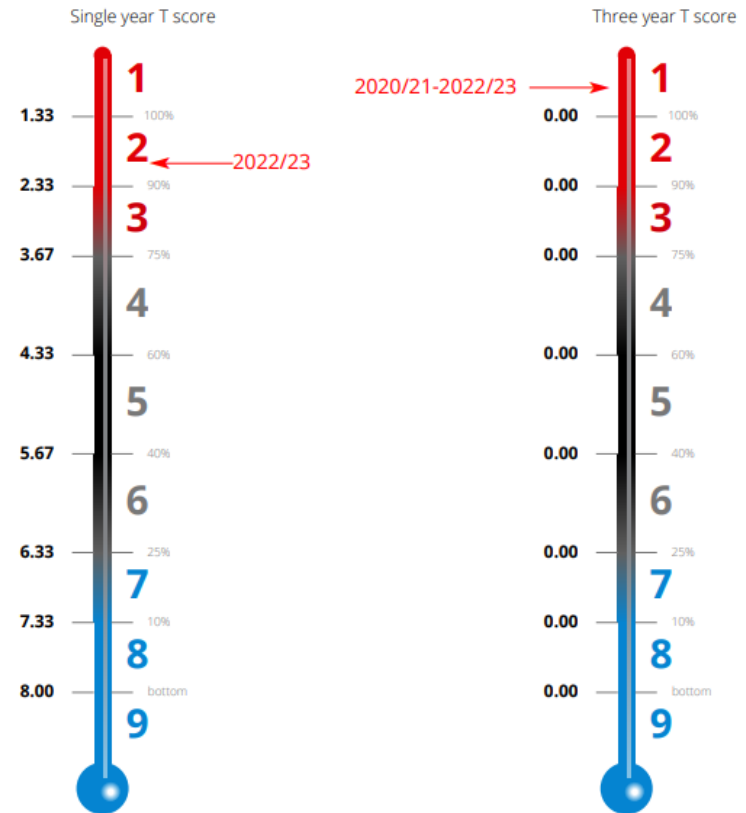
Progress 2023

- Alps compares progress at KLB with over 1300 schools and colleges:
 - Each subject
 - Every student with the same GCSE profile
 - 4 key measures (graded 1 – 9)
 - Grade 3: Top 25%
 - Grade 2: Top 10%
 - Grade 1: Nobody better!



Progress 2021 - 23

- Alps compares progress at KLB with over 1300 schools and colleges:
 - Each subject
 - Every student with the same GCSE profile
 - 4 key measures (graded 1 – 9)
 - Grade 3: Top 25%
 - Grade 2: Top 10%
 - Grade 1: Nobody better!



Why?

High expectations and fantastic ethos

Excellent teaching and strong leadership

Supportive environment

Great opportunities



Dispelling the Myths

1. Do I need a grade 4 in maths to come to KLB Sixth Form?



Dispelling the Myths

1. Do I need a grade 4 in maths to come to KLB Sixth Form?

No! Only if it's relevant to a specific subject.

Physics

Sociology



Dispelling the Myths

2. Do I need a grade 4 in English to come to KLB Sixth Form



Dispelling the Myths

2. Do I need a grade 4 in English to come to KLB Sixth Form

No! Only if it's relevant to a specific subject.

Sociology

Physics



Dispelling the Myths

3. Do I have to study 4 subjects in year 12



Dispelling the Myths

3. Do I have to study 4 subjects in year 12

No! Most students start with 4, but not all.....

We'll explain our thinking.....



Dispelling the Myths

4. The entry requirements to study at KLB are higher than elsewhere...



Dispelling the Myths

4. The entry requirements to study at KLB are higher than elsewhere...

No! Not at all.....

Let's show you.....



Biology

	Cirencester	Hartpury	Cotswold Edge	Castle	Rednock
Biology	6	6	6	6 (+1)	6
Combined Science	66	66	66	66	66
Maths	5	6	6	6	5
English	5	4	5	X	5

Biology

	Cirencester	Hartpury	Cotswold Edge	Castle	Rednock	KLB
Biology	6	6	6	6 (+1)	6	6
Combined Science	66	66	66	66	66	56
Maths	5	6	6	6	5	5
English	5	4	5	X	5	X

Spanish

	Cirencester	Hartpury	Cotswold Edge	Castle	Rednock
Spanish	6		6		
English	4		5		
Maths	4		4		

Spanish

	Cirencester	Hartpury	Cotswold Edge	Castle	Rednock	KLB
Spanish	6		6			6
English	4		5			X
Maths	4		4			X

Psychology

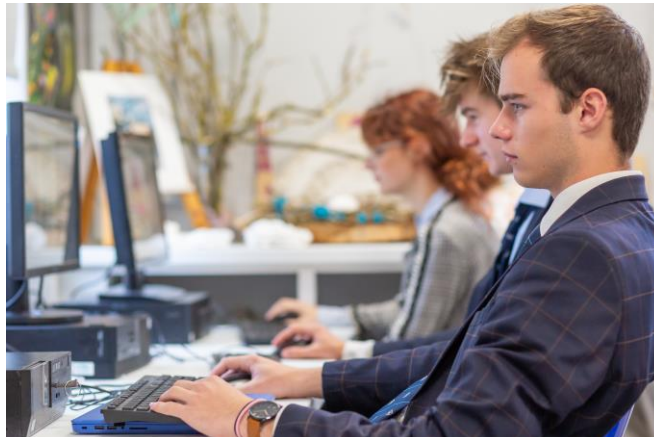
	Cirencester	Hartpury	Cotswold Edge	Castle	Rednock
Combined Science	X	X	66	55	4
Maths	5	6	4	5	4
English	4	6	5	5	5

Psychology

	Cirencester	Hartpury	Cotswold Edge	Castle	Rednock	KLB
Combined Science	X	X	66	55	4	X
Maths	5	6	4	5	4	5
English	4	6	5	5	5	5

Life in the Sixth Form

- A level courses and entry requirements
- Considerations
- Year 12 timetable
- Our support



Courses offered

Biology

Business

Chemistry

Chinese

Design Technology

Drama

Economics

English Literature

Film Studies

Fine Art

French

Geography

Computing

Graphic Art

History

Japanese

Mathematics

Mathematics (Further)

Music

Photography

Physical Education

Physics

Psychology

Sociology

Spanish

Food Science and Nutrition

Courses offered

Biology

Business

Chemistry

Chinese

Design Technology

Drama

Economics

English Literature

Film Studies

Fine Art

French

Geography

Computing

Graphic Art

History

Japanese

Mathematics

Mathematics (Further)

Music

Photography

Physical Education

Physics

Psychology

Sociology

Spanish

Food Science and Nutrition

Courses offered

Biology

Business

Chemistry

Chinese

Design Technology

Drama

Economics

English Literature

Film Studies

Fine Art

French

Geography

Computing

Graphic Art

History

Japanese

Mathematics

Mathematics (Further)

Music

Photography

Physical Education

Physics

Psychology

Sociology

Spanish

Food Science and Nutrition

Programmes of Study

- Linear courses
- Most select 4 subjects - why?
- Students use results from year 12 assessment points to determine final A level choices
- Some start with 3 subjects



Entry Requirements

- 3 Grade 5 and 2 Grade 4 passes at GCSE
- GCSE grade requirements for each A level course
- For most subjects, a Grade 5 is required in that subject at GCSE
- Grade 6 for mathematics, biology, chemistry, physics and languages
- For new subjects?
- Grades for viable programme of study - in most cases, 4 subjects but...

How to Choose Courses

- Career consideration
- Continuing with subjects from GCSE
- Content appeals and assessment suits
- New subjects
- Important to do research
 - university/apprenticeship websites
 - ‘preferred/facilitating subjects’
 - Russell Group <https://www.informedchoices.ac.uk/>
 - UCAS further education
 - must look at GCSE requirements too e.g. teaching
- Balance, breadth and works as a package
- Not more than two practical subjects
- Both business studies and economics?
- Talk to us



The Year 12 Timetable

- 9 hours per subject per fortnight
- 1 hour of life skills
- 2 hours of enrichment
- 39/50 hours
- Study periods
- *Extended Project Qualification (EPQ)*
- *Retake programme for English Language and Maths GCSE*



Support for Students

- **Emphasis on positive mindset and approach**
- Bridging and initial tasks
- Recognise success and act on concerns
- Regular assessments
- Study Library – 8 'til late!
- Post-16 bursary
- Future plans specialist support
- Support from the Sixth Form team and teachers



Beyond the classroom



Enrichment

- First Aid
- Games
- Conversational Italian
- Knitting (+pottery)
- CANSAT
- Sixth Form newsletter
- Extended Project Qualification (EPQ)
- Charity team
- School's official photography team
- Book club
- Sign Language
- Chess
- Book group and film club



In the community and beyond.....

Community Service:

Primary schools

- General help
- Sports afternoons
- Science outreach work
- After school clubs

Pre-schools and nurseries

Care homes

Charity shops

Work experience

e.g. Rowe Vets, Car Clinic

Access to Bristol/Pathways to Healthcare



To support the wider school....

- Reading programme with keystage 3 tutor groups
- Help in departments
- Chair School Council
- TIC – peer counselling
- Support Room at lunchtime and during lessons (vulnerable pupils)
- Student ambassadors – tours around school (6SLT)

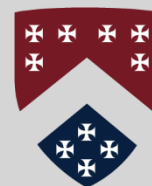


Extra Curricular, Activities Week and More....

- Social events in school
- Debating club
- Tutor group quiz
- Charities and fundraising activities
- Duke of Edinburgh Scheme
- TEFL (Teaching English as a Foreign Language)
- KLB Christmas Market
- Charity calendar
- Sport – teams and for fun!



Application Timeline



**SIXTH
FORM**

With effort comes reward

Thurs 16 Nov 2023	<p>KLB Sixth Form Open Evening</p> <ul style="list-style-type: none">• Why choose KLB Sixth Form?• How do I choose my courses?• What does KLB offer beyond the classroom? <p>This is accompanied by:</p> <ul style="list-style-type: none">• our prospectus and course guide (online and hard copy)
w/b 27 November 2023	Application form posted online. Please note the deadline is February half term.
Mid-January 2024	Q&A Zoom session (1) hosted by Sixth Form staff and members of the Sixth Form Leadership Team.
Wednesday 31 st January and Thursday 1 st February	Taster lessons take place over two days. Wednesday 31 st for students applying from other schools
Wednesday 17 th January and Tuesday 6 th February	Q&A MS Teams session (2) hosted by Sixth Form staff and members of the Sixth Form Leadership Team
Friday 9 th February	Deadline for applications to be submitted
February half term	Options blocks optimised
Early March 2024	Option blocks published
March/April 2024	All students interviewed by a member of the Sixth Form Team
Early July	Summer transition work released
Thurs 22 August 2024	GCSE results day
Tues 27 August 2024	Deadline to confirm acceptance of places

And finally.....

- What's stopping you?
 - Our curriculum offer?
 - Get in touch!
 - Tell us.....

What our students say....

I truly believed I would never make it to sixth form , it was my greatest achievement to get in being brought up throughout primary school I was constantly told off how stupid and silly I was and would never be able to get qualifications.

Well, the fact I was able to get into sixth form and be able to study the subject I love , is just a dream to be honest. It always was my goal seeing my brother have such fun and learning. And it's all thanks to you making me believe in myself for once.

KLB has taught me so and the lessons I have learned will stay by my side till the end. The greatest is never give up no matter what the problem may be. Though the bad, sad and happy I have learnt so much and will greatly miss it. Thank you for giving me a chance making me believe in myself and keeping me going when I was down.

KLB will always have a place in my heart and I'm proud to have been a pupil. Thank you thank you thank you. Keep on inspiring.

Join us!

